

# Technical Information

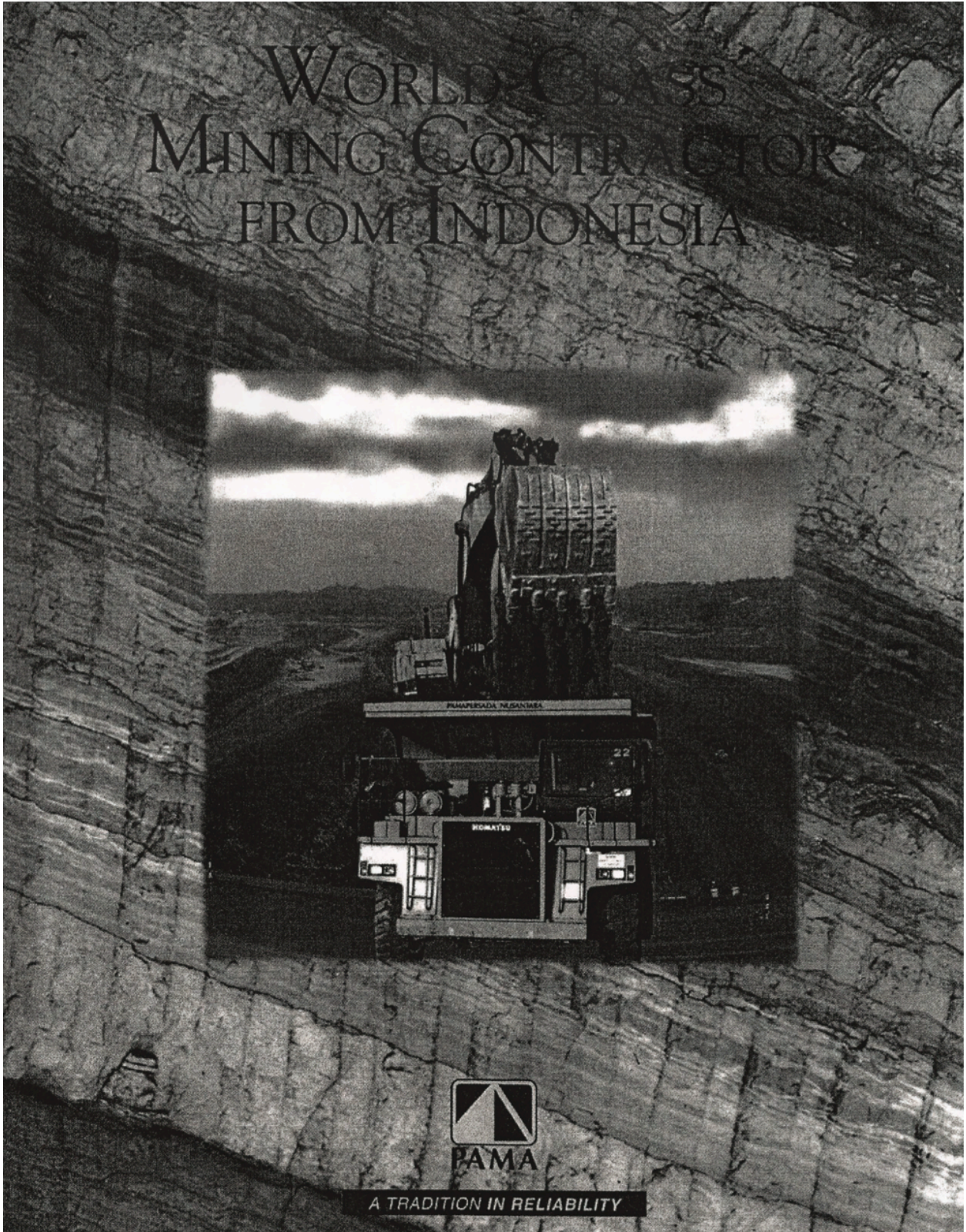
## *Inspection Reports*

PAMA is a very large mining company in Indonesia. Xtreme Fuel Treatment™ is used in all company owned HD 785-5 Engines. The normal maintenance cycle required prior to engine re-manufacturing occurred previously at 15,000 hours or 900,000 miles. This maintenance included replacing cylinder liners with new, expensive liners. After years of using Xtreme Fuel Treatment™ the regular maintenance schedule was changed from 15,000 hours to 25,000 hours before the total reconstruction of the engine was required. Using Xtreme Fuel Treatment™ has kept the cylinder liners within nearly identical tolerances of new liners. Enclosed are inspection reports showing measurements of a new liner and a liner with 14,887 hours of run time. Tolerances are within 'new' specifications. This, along with the cleanliness of the engine, has saved PAMA millions of dollars in maintenance expenses.

Distributed By: Syntek Global Inc.  
12382 South Gateway Park Place Suite B800  
Draper, UT 84020  
801-386-5007



# WORLD CLASS MINING CONTRACTOR FROM INDONESIA



# Old Liner

PAK S. YD & Mr. DENTON

OLD LINER

**QA : 5**  
MEASURE & INSPECTION SHEET (04 of 08)

**PT. PAMAPERSADA NUSANTARA**  
COMEXSHOP DEPARTMENT

UNIT MODEL	: HD 785-S	ENGINE MODEL	: SA12V140
SERIAL NUMBER	: 4589	SERIAL NUMBER	: 13912
LIFE TIME	: 14.887	MECHANIC	: Eko Wahono
WO NO.	: 0004044	DATE	: 20 Juli 2007

ID. CYLINDER LINER				
STANDARD		A	B	C
R1	X-X	140,035	140,035	140,035
	Y-Y	140,040	140,050	140,040
R2	X-X			
	Y-Y			
R3	X-X			
	Y-Y			
R4	X-X			
	Y-Y			
R5	X-X			
	Y-Y			
R6	X-X			
	Y-Y			
L1	X-X			
	Y-Y			
L2	X-X			
	Y-Y			
L3	X-X			
	Y-Y			
L4	X-X			
	Y-Y			
L5	X-X			
	Y-Y			
L6	X-X			
	Y-Y			

PROTUTION OF CYL. LINER	
STD	0.07 - 0.15
NO.	ACTUAL
R1	
R2	
R3	
R4	
R5	
R6	
L1	
L2	
L3	
L4	
L5	
L6	
L7	

ROUNDNESS	
R. LIMIT	0.08
NO.	ACTUAL
R1	
R2	
R3	
R4	
R5	
R6	
L1	
L2	
L3	
L4	
L5	
L6	
L7	

CYLINDRICITY	
R. LIMIT	0.08
NO.	ACTUAL
R1	
R2	
R3	
R4	
R5	
R6	
L1	
L2	
L3	
L4	
L5	
L6	
L7	

**CYLINDER LINER**

DETAIL "P"

Liner Protrusion

INSPECTED BY : Abu

# New Liner

AK SATI & MR. BENTON

NEW LINER

**QA : 5**  
MEASURE & INSPECTION SHEET (04 of 08)

**PT. PAMAPERSADA NUSANTARA**  
COMEXSHOP DEPARTMENT

UNIT MODEL : HD785-S	ENGINE MODEL : SA12V140
SERIAL NUMBER :	SERIAL NUMBER :
LIFE TIME : NEW COMP	MECHANIC : EKO WATONO
WVO NO. :	DATE : 20 Juli 2007

ID. CYLINDER LINER			
STANDARD		140	+ 0.040 + 0.021
		A	B
R1	X-X	140,030	140,030
	Y-Y	140,030	140,030
R2	X-X		
	Y-Y		
R3	X-X		
	Y-Y		
R4	X-X		
	Y-Y		
R5	X-X		
	Y-Y		
R6	X-X		
	Y-Y		
L1	X-X		
	Y-Y		
L2	X-X		
	Y-Y		
L3	X-X		
	Y-Y		
L4	X-X		
	Y-Y		
L5	X-X		
	Y-Y		
L6	X-X		
	Y-Y		

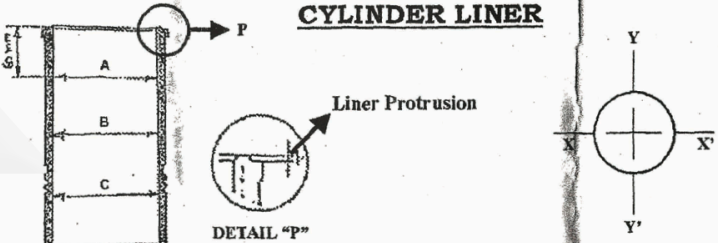
PROTUTION OF CYL. LINER	
STD	0.07 - 0.15
NO.	ACTUAL
R1	
R2	
R3	
R4	
R5	
R6	
L1	
L2	
L3	
L4	
L5	
L6	
L7	

ROUNDNESS	
R. LIMIT	0.08
NO.	ACTUAL
R1	
R2	
R3	
R4	
R5	
R6	
L1	
L2	
L3	
L4	
L5	
L6	
L7	

CYLINDRICITY	
R. LIMIT	0.08
NO.	ACTUAL
R1	
R2	
R3	
R4	
R5	
R6	
L1	
L2	
L3	
L4	
L5	
L6	
L7	



INSPECTED BY: ABU

# Liner

---

